



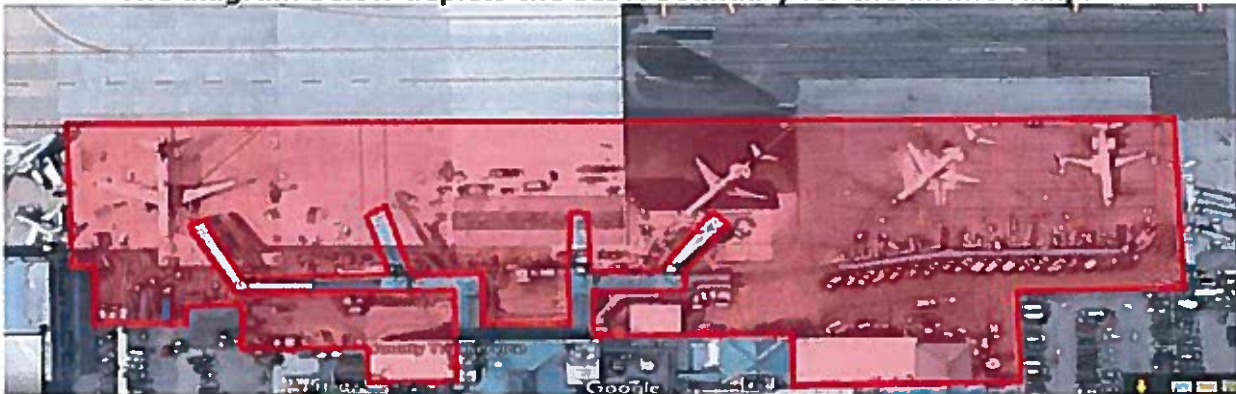
Westchester County Airport
240 Airport Road, Suite 202
White Plains, New York 10604
Tel 914.995.4850
Fax 914.995.3980
www.avports.com

Airport Bulletin #18-02
March 29, 2018

Continuous Random Airport Vehicle Inspections on the HPN SIDA

In response to a Transportation Security Administration (TSA) Security Directive (SD), effective immediately, all vehicles, vehicle operators and passengers will be subject to inspection prior to entering the Security Identification Display Area (SIDA) at the terminal building.

The diagram below depicts the SIDA boundary for the airline ramp.



To expedite the inspection process all vehicle operators must notify Airport Operations **prior** to entering the SIDA. Contact Airport Operations by dialing (914) 995-4850 or use your vehicle radio to contact Unicom on VHF frequency 122.95.

After placing your call, an Airport Operations staff member will meet your vehicle to conduct the inspection. It is important to recognize that entering the SIDA prior to the required inspection is a violation of TSA's security directive. In most cases the inspection should take just a few minutes. It would be advisable to provide early notification of your intent to operate within the SIDA.

Please contact Airport Operations if you have questions about this bulletin.

As always, we appreciate your help and continued effort and compliance with our security protocols.


Steve Ferguson
Assistant Airport Manager / Airport Security Coordinator
Westchester County Airport

Cc: Peter Scherrer, WC Airport, John Starace, WC Airport, Lt Genesi, WCPD, John Ellison, TSA

Always Dependable. Always Accountable.